



2014 Commodore's Cruise



Islands of the Pacific Northwest

One or Two Week Cruise

Week 1: September 14th – 20th

Week 2: September 21st – 27th

Cruise Options:

1st Week

2nd Week

Both Weeks

Week #1: September 13th through 20th

18-Chemainus

17-Ganges

19-Bedwell

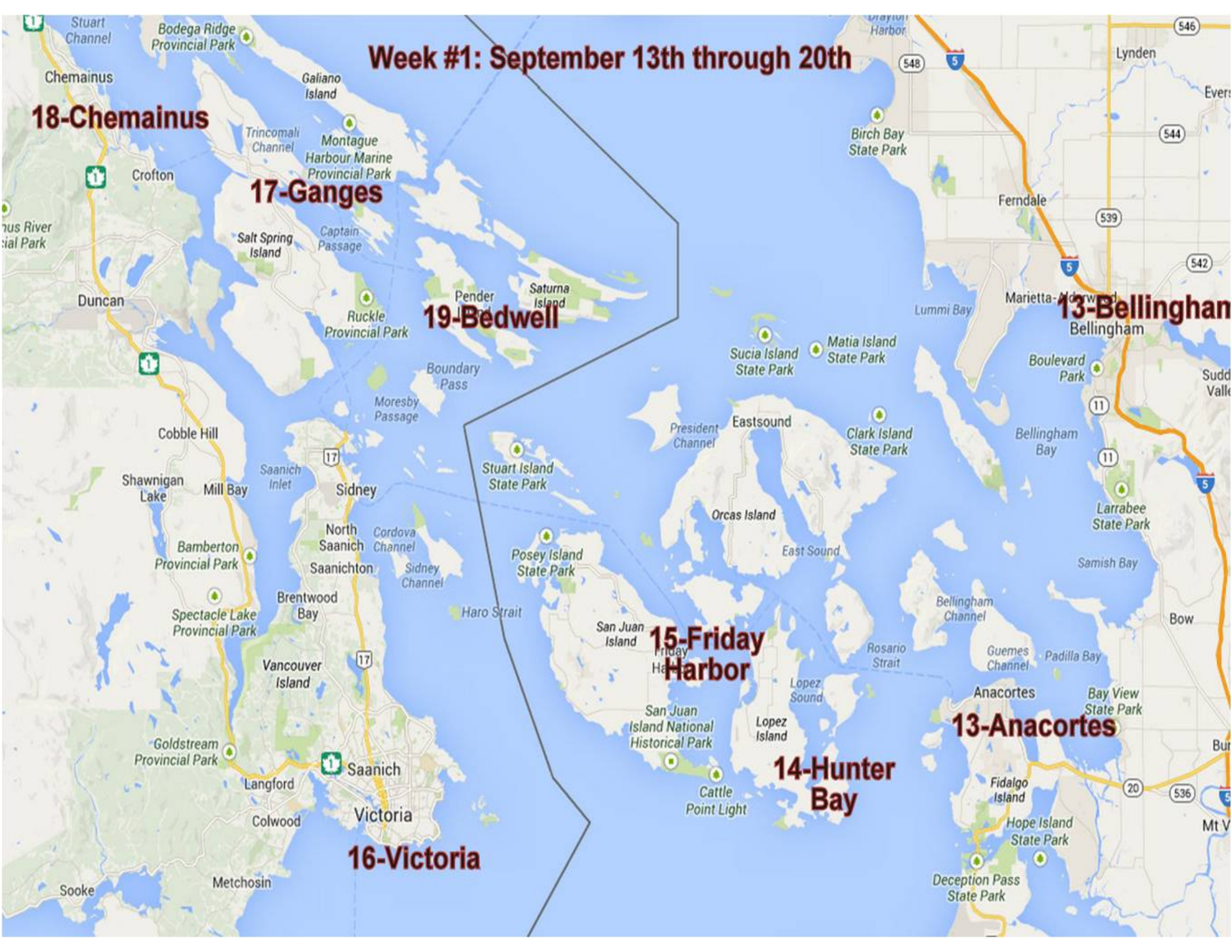
13-Bellingham

15-Friday Harbor

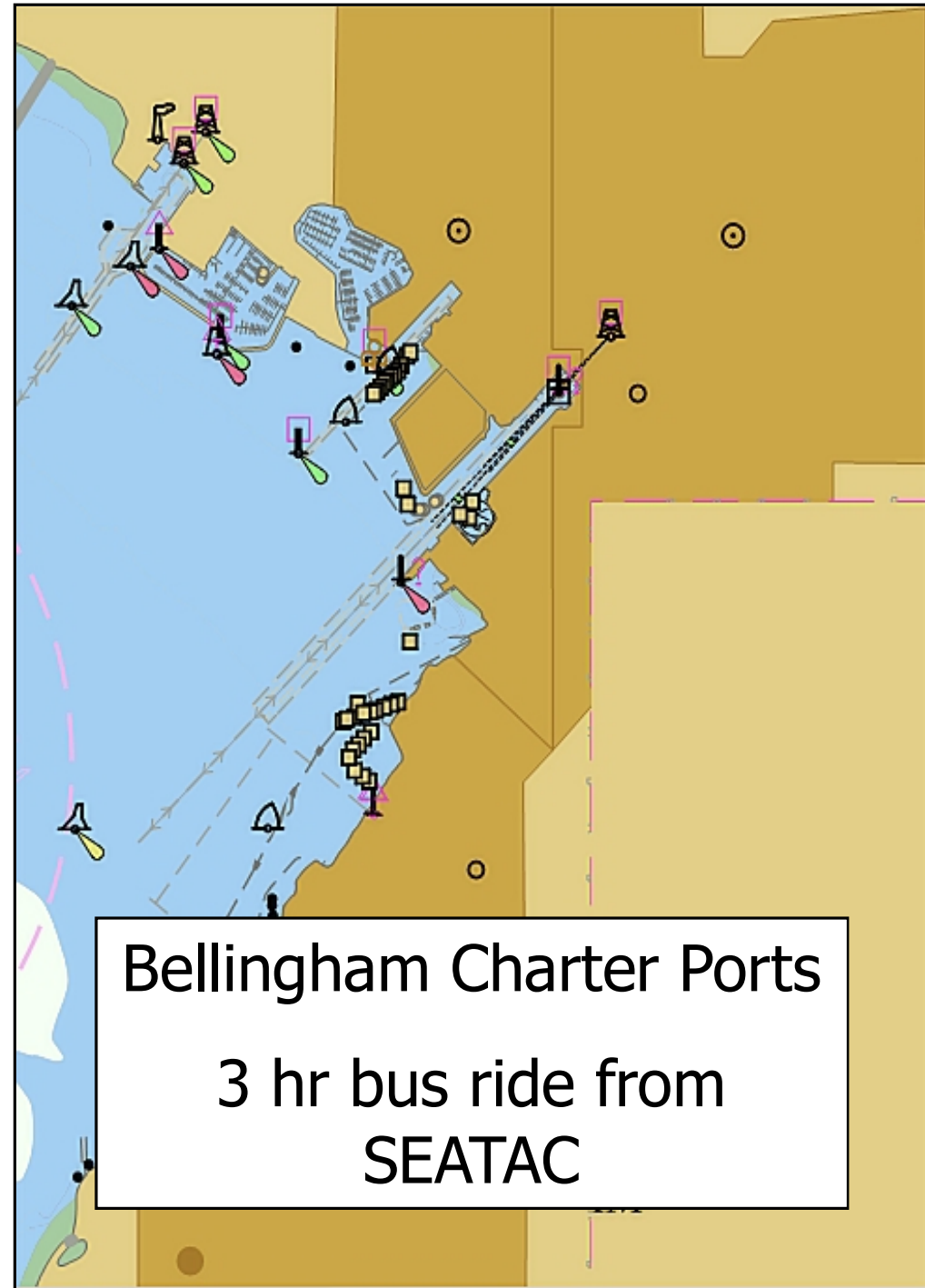
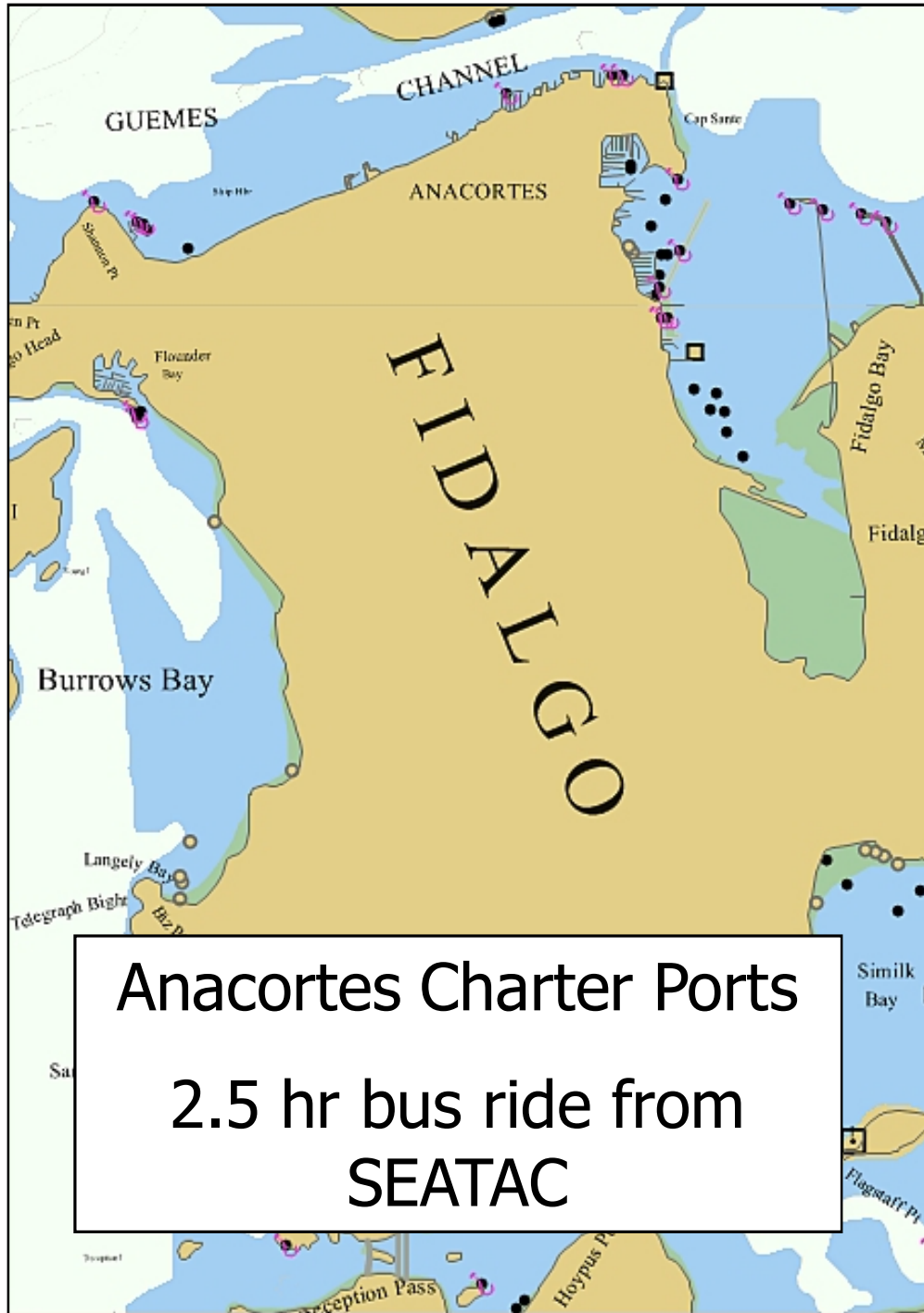
14-Hunter Bay

13-Anacortes

16-Victoria

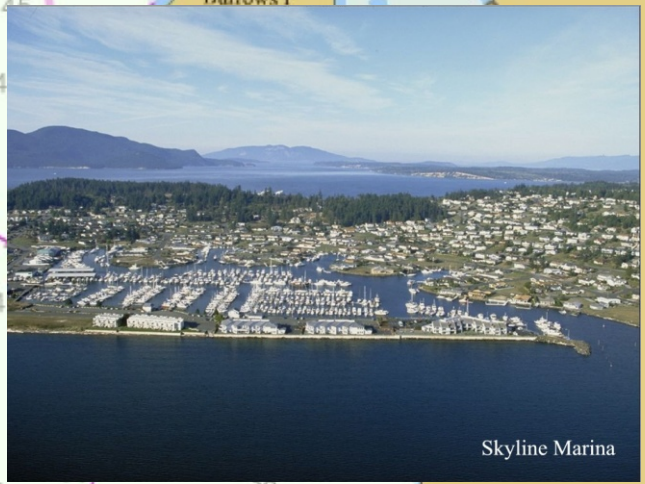
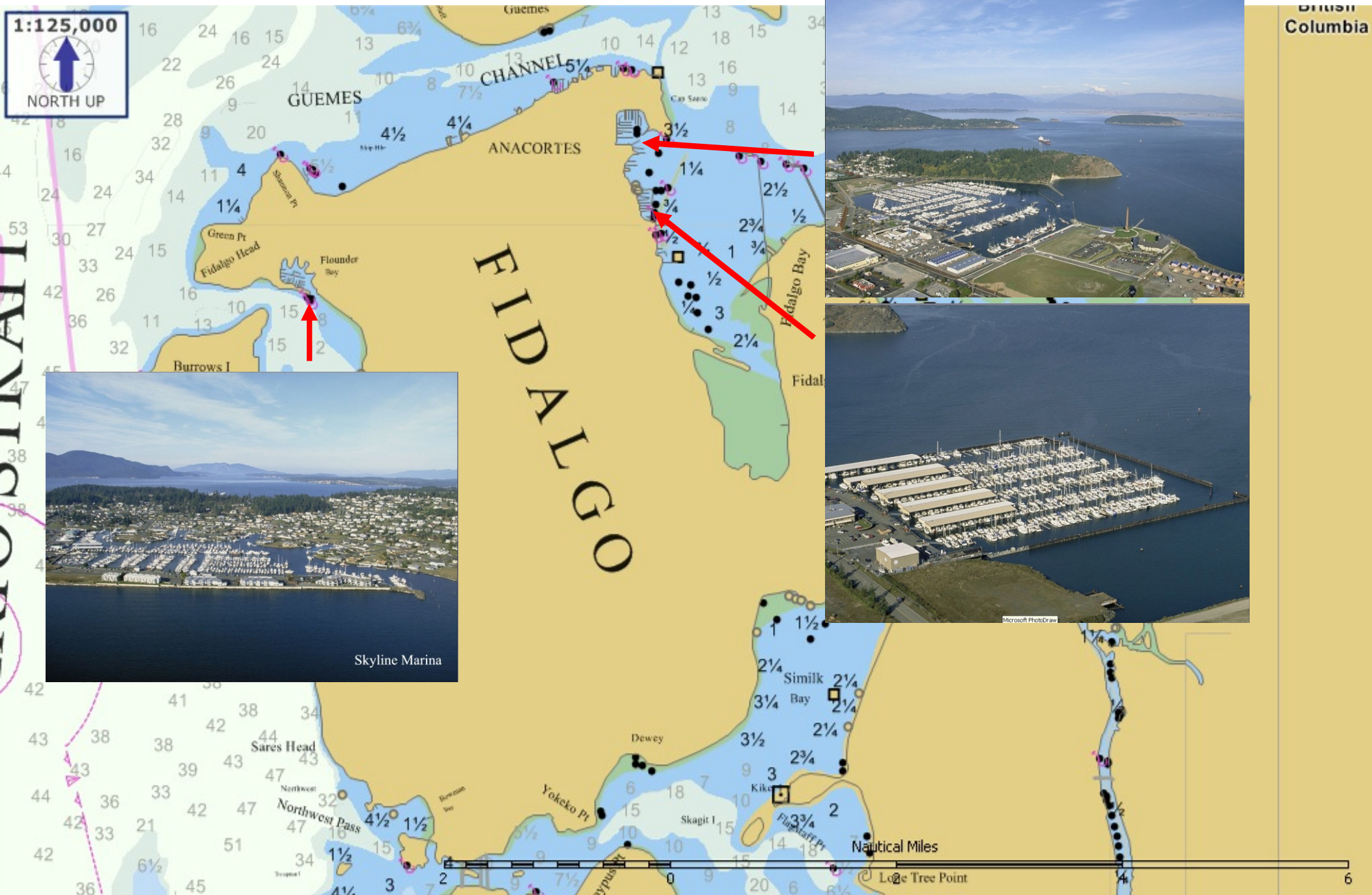


Saturday, Sept 13: Fly to SEATAC, then bus to Charter Ports



Sunday, Sept 14: Anacortes Charter Marinas

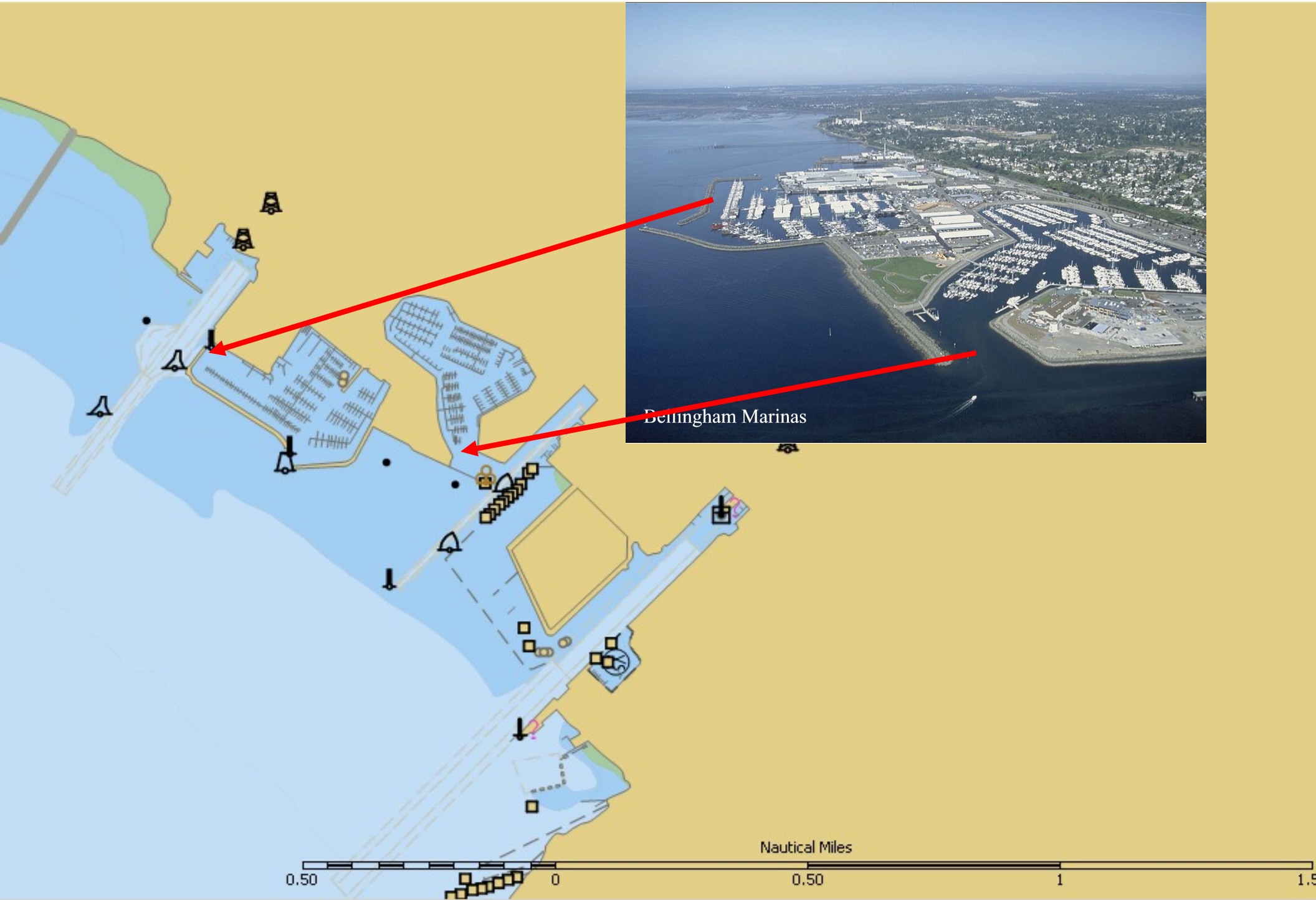
1:125,000
NORTH UP



Skyline Marina

British Columbia

Sunday, Sept 14: Bellingham Charter Marinas



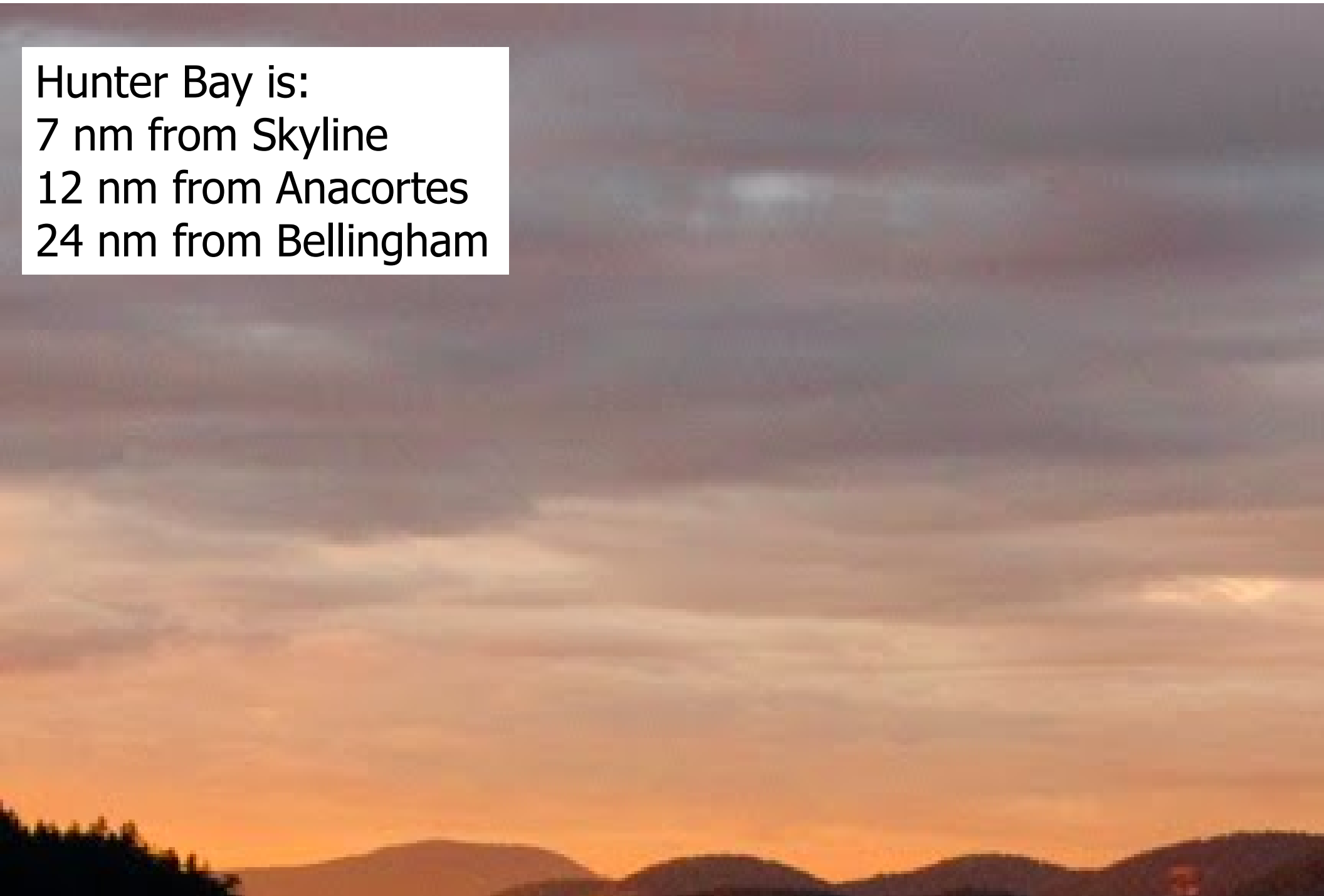
Sunday, Sept 14: Anacortes/Bellingham to Hunter Bay, Lopez Is.

Hunter Bay is:

7 nm from Skyline

12 nm from Anacortes

24 nm from Bellingham



Sunday, Sept 14: Hunter Bay Side Tie Raft



Sunday, Sept 14: Hunter Bay Sunflower Raft



Monday, Sept 15: Hunter Bay to Friday Harbor, San Juan Island

Friday Harbor is 13 nm
from Hunter Bay



Friday Harbor & Brown Island

Tuesday, Sept 16: Victoria Harbor, Canadian Customs

Victoria is 28 nm from
Friday Harbor



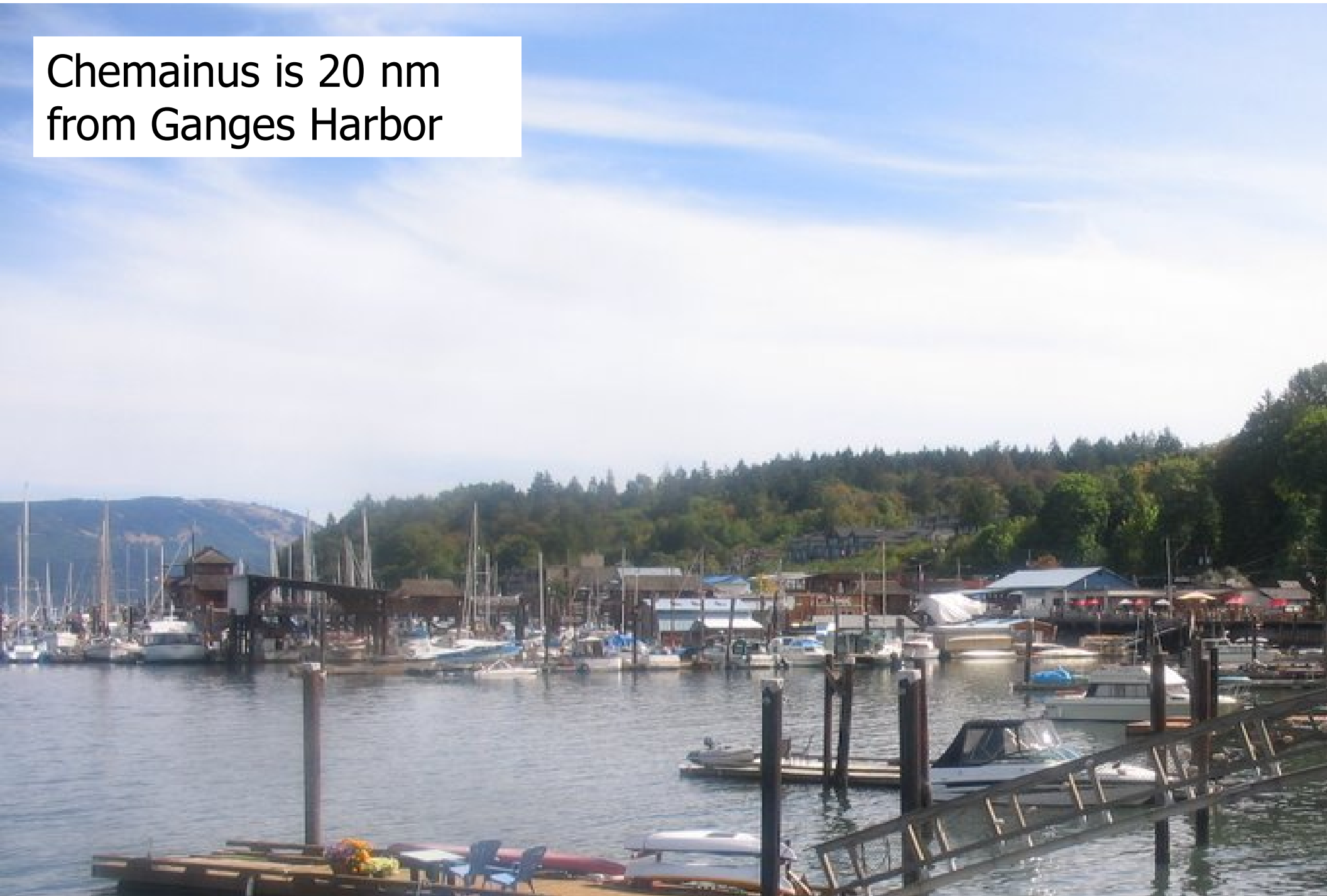
Wednesday, Sept 17: Victoria to Ganges Harbor, Saltspring, Is

Ganges Harbor is
36 nm from Victoria



Thursday, Sept 18: Ganges Harbor to Chemainus, Vancouver Is.

Chemainus is 20 nm
from Ganges Harbor

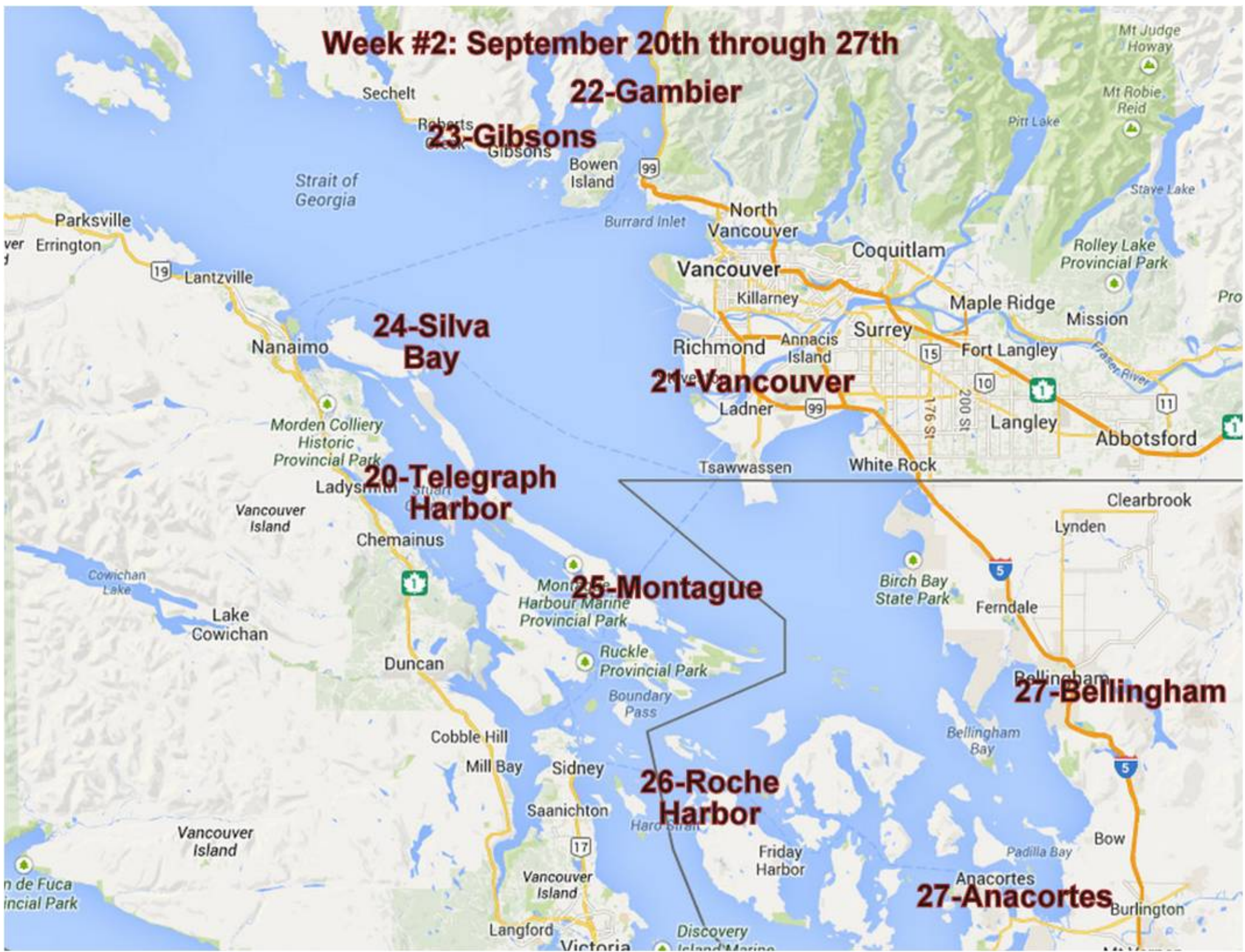


Friday, Sept 19: Chemainus to Bedwell Harbor, Pender Island

Bedwell Harbor is
27 nm from Chemainus



Week #2: September 20th through 27th



22-Gambier

23-Gibsons

24-Silva Bay

20-Telegraph Harbor

21-Vancouver

25-Montague

26-Roche Harbor

27-Bellingham

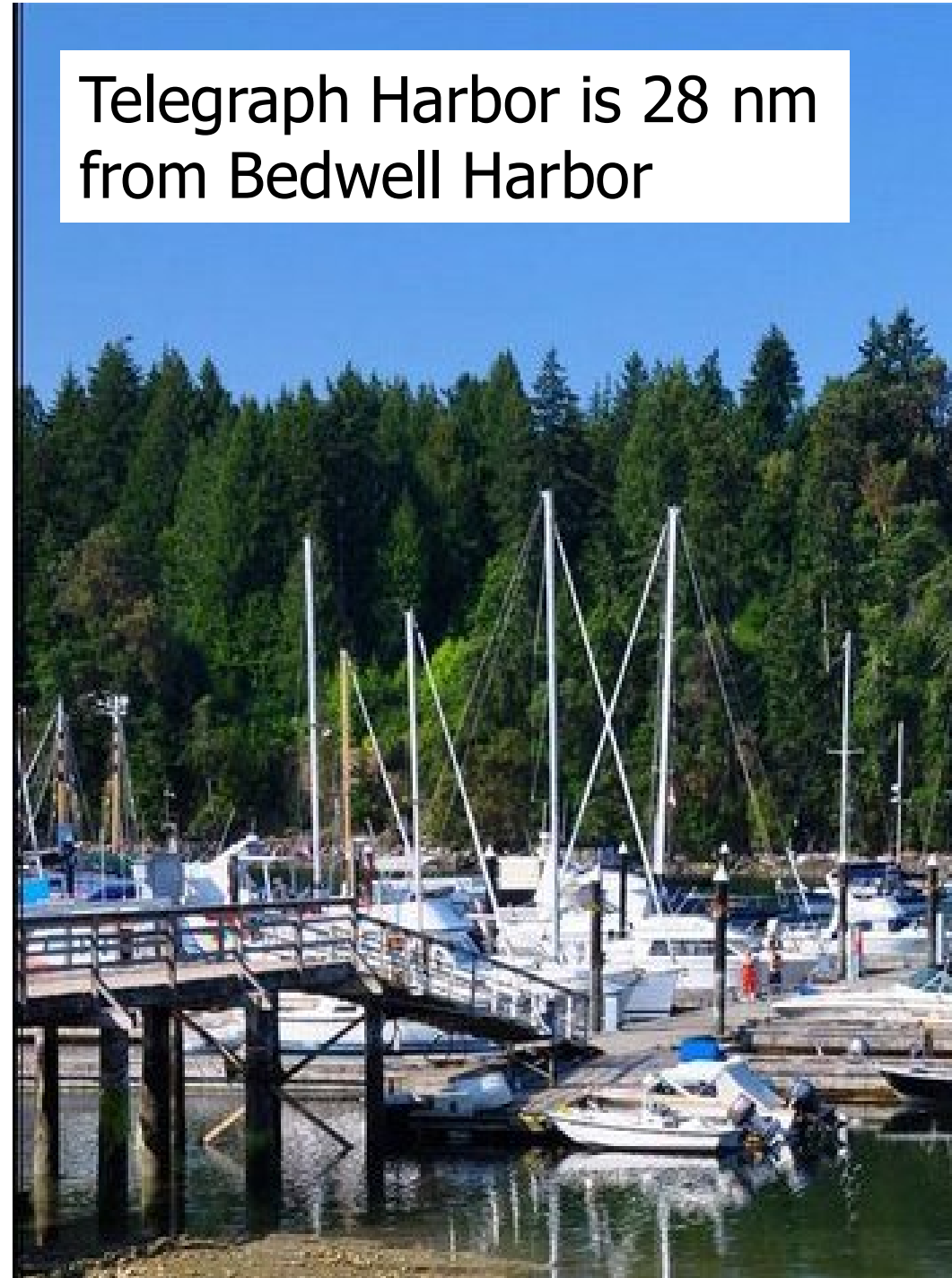
27-Anacortes

Saturday, Sept 20: Bedwell to Anacortes, or Telegraph Harbor

Anacortes is 32 nm
from Bedwell Harbor



Telegraph Harbor is 28 nm
from Bedwell Harbor

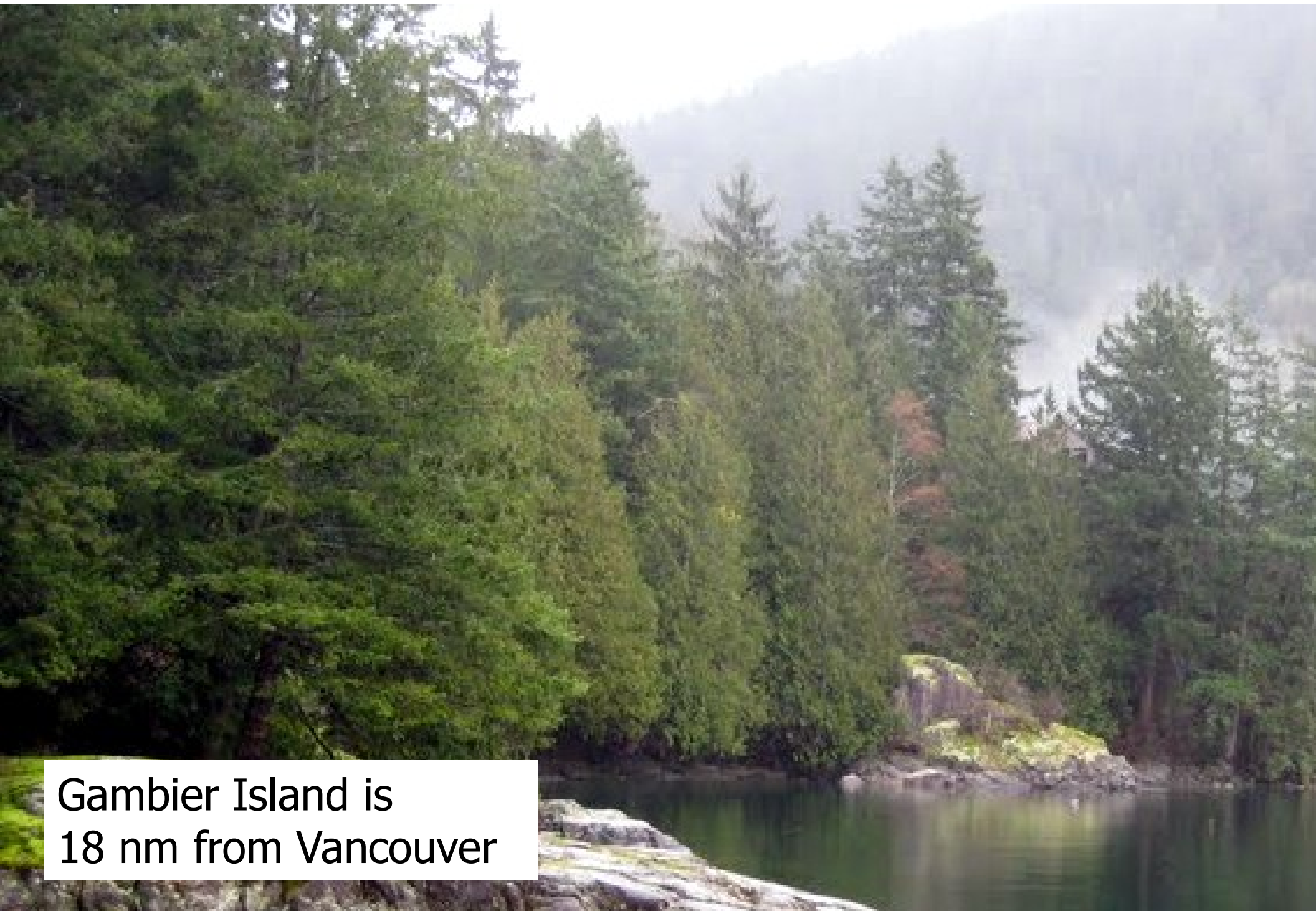


Sunday, Sept 21: Telegraph Harbor to False Creek-Vancouver

Vancouver is 38 nm
from Telegraph Harbor



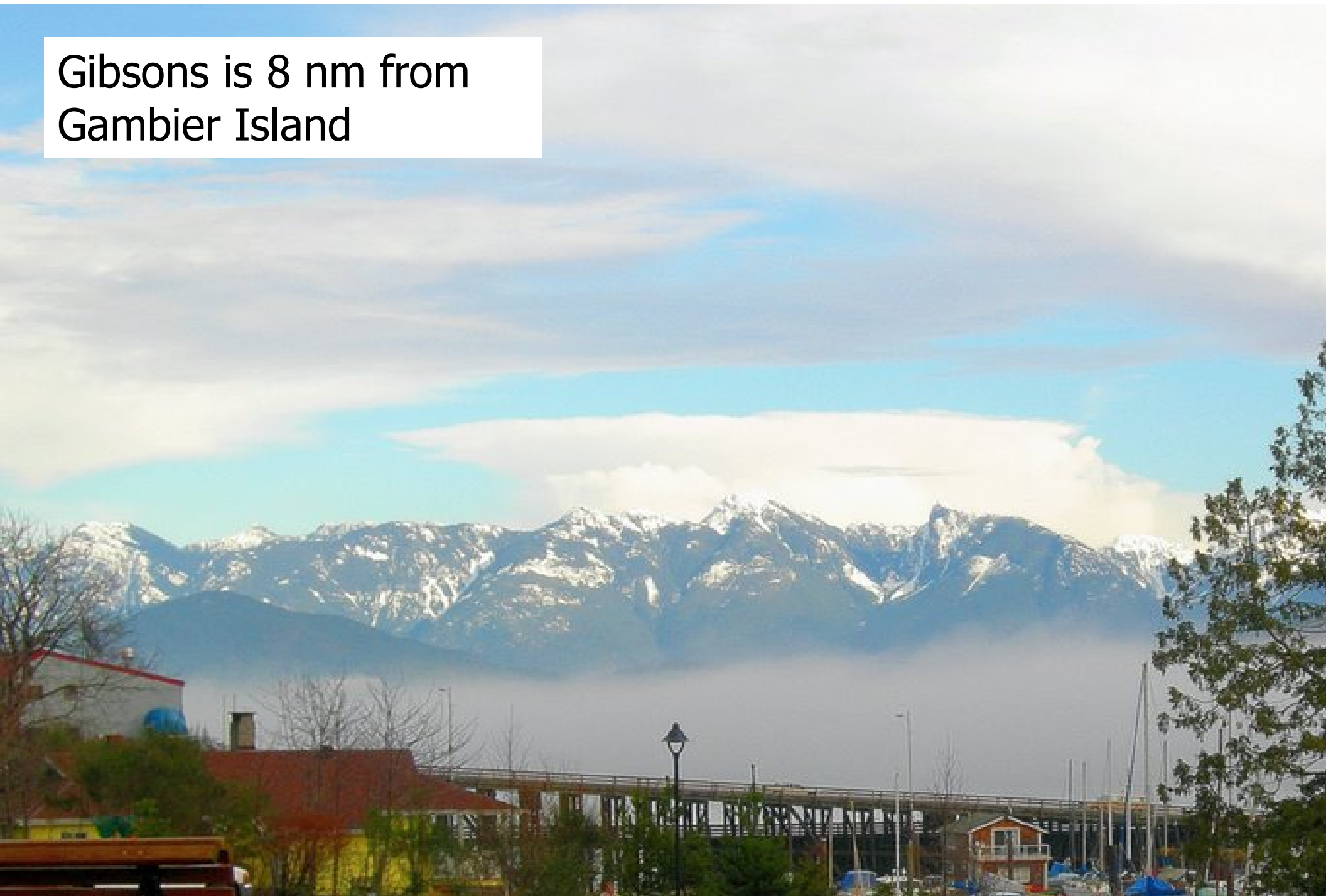
Monday, Sept 22: Vancouver to Gambier Island



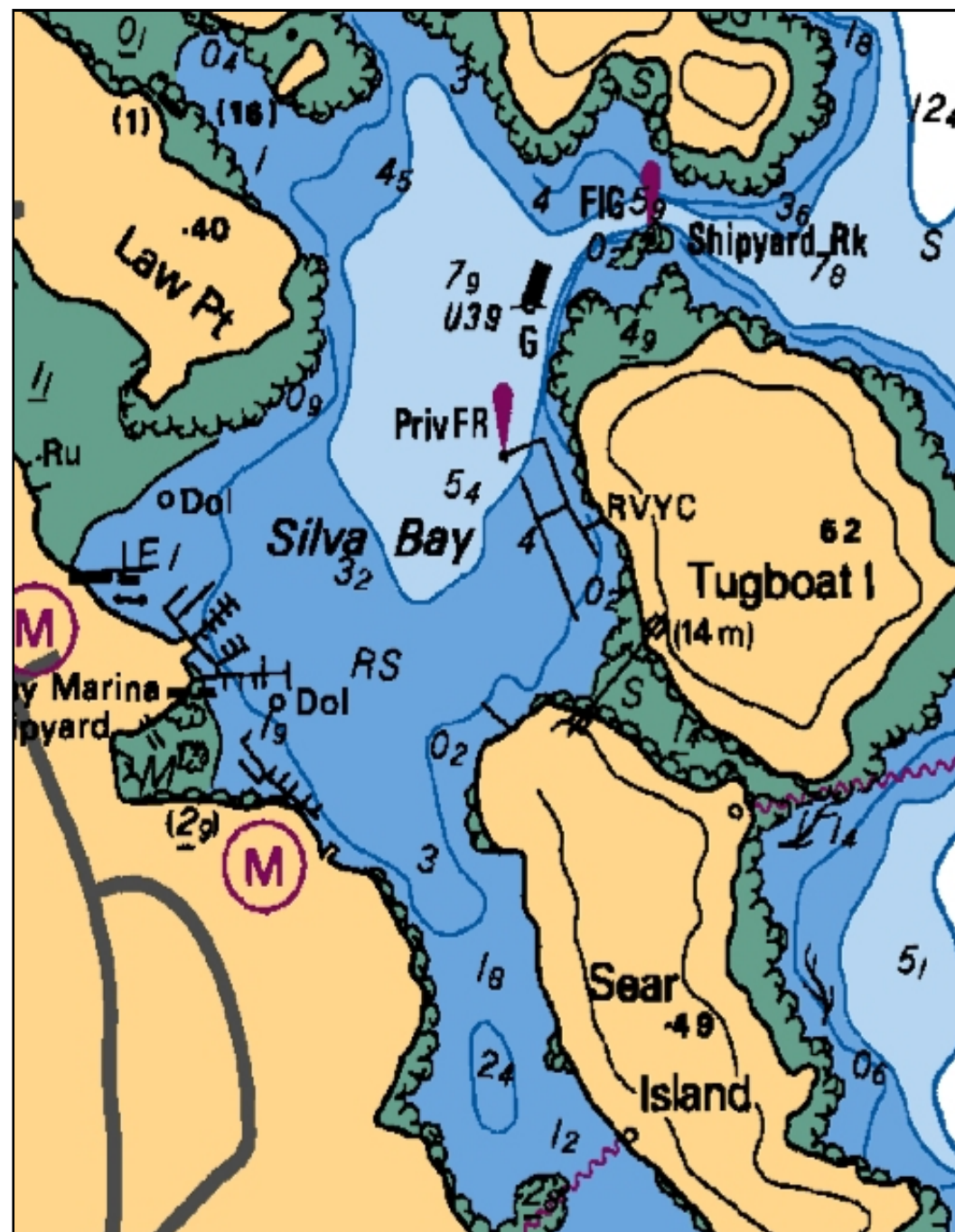
Gambier Island is
18 nm from Vancouver

Tuesday, Sept 23: Gambier Island to Gibsons

Gibsons is 8 nm from
Gambier Island

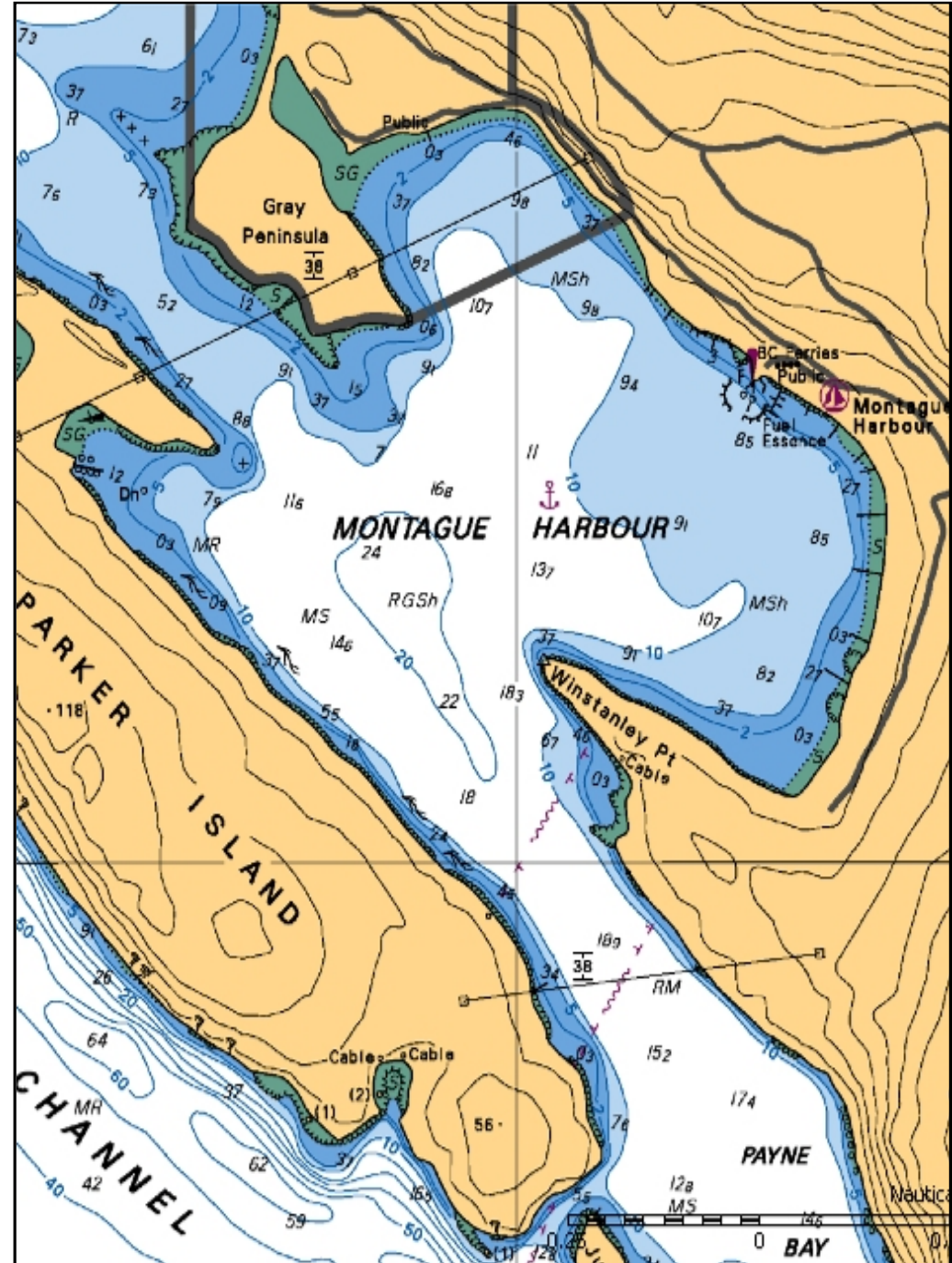
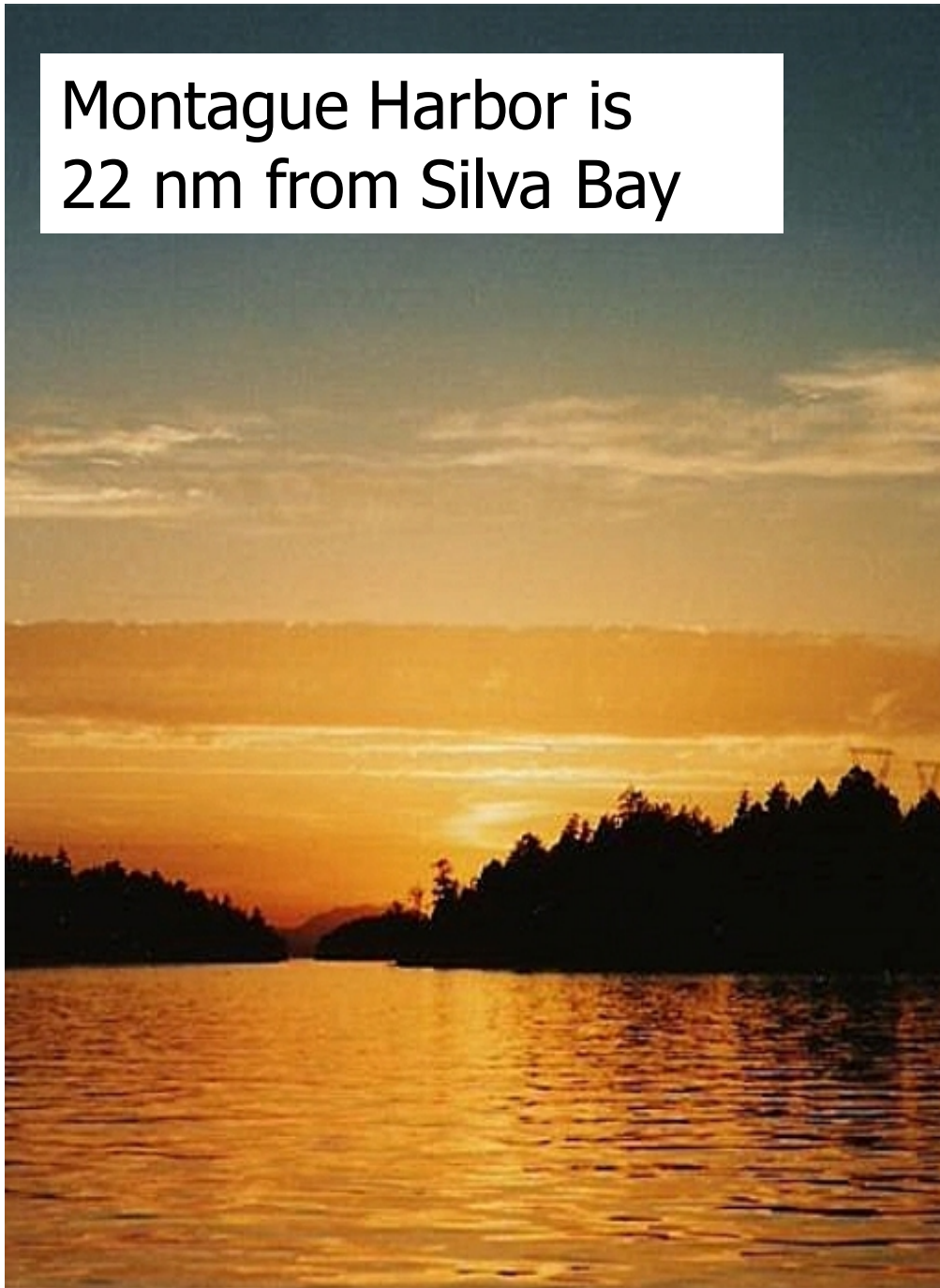


Wednesday, Sept 24: Gibsons to Silva Bay, Gabriola Island



Thursday, Sept 25: Silva Bay To Montague Harbor, Galiano Island

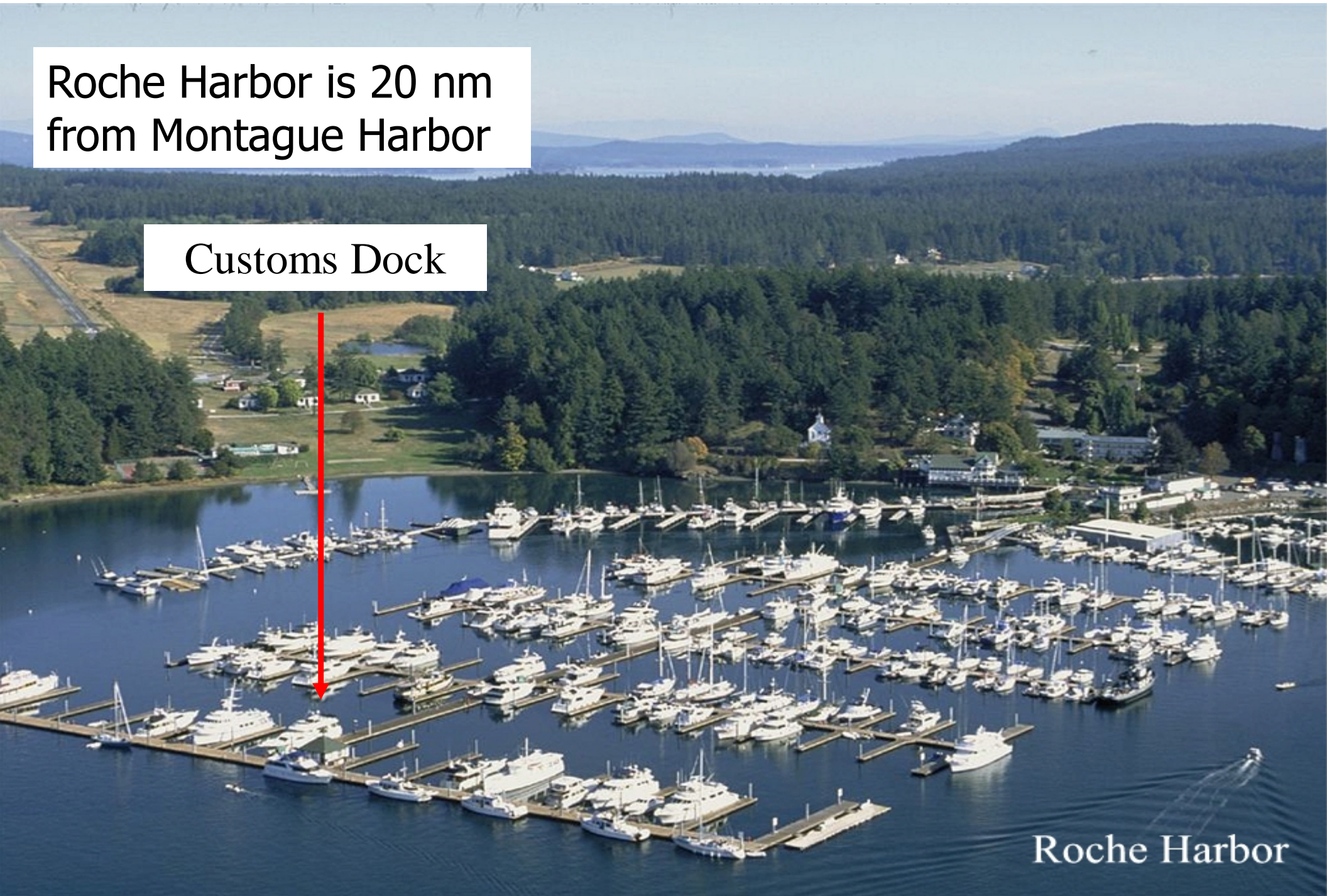
Montague Harbor is
22 nm from Silva Bay



Friday, Sept 26: Montague Harbor to Roche Harbor, US Customs

Roche Harbor is 20 nm
from Montague Harbor

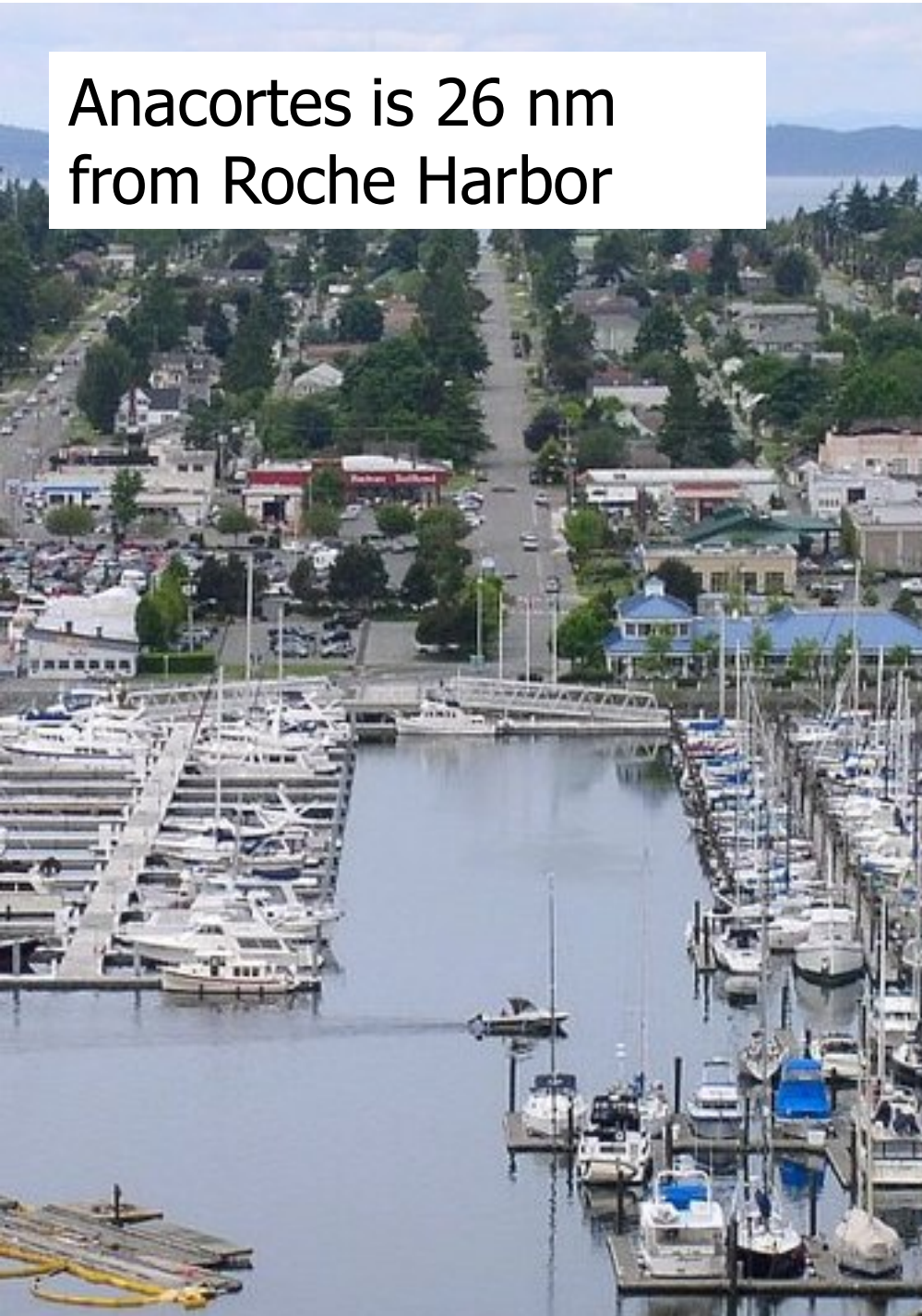
Customs Dock



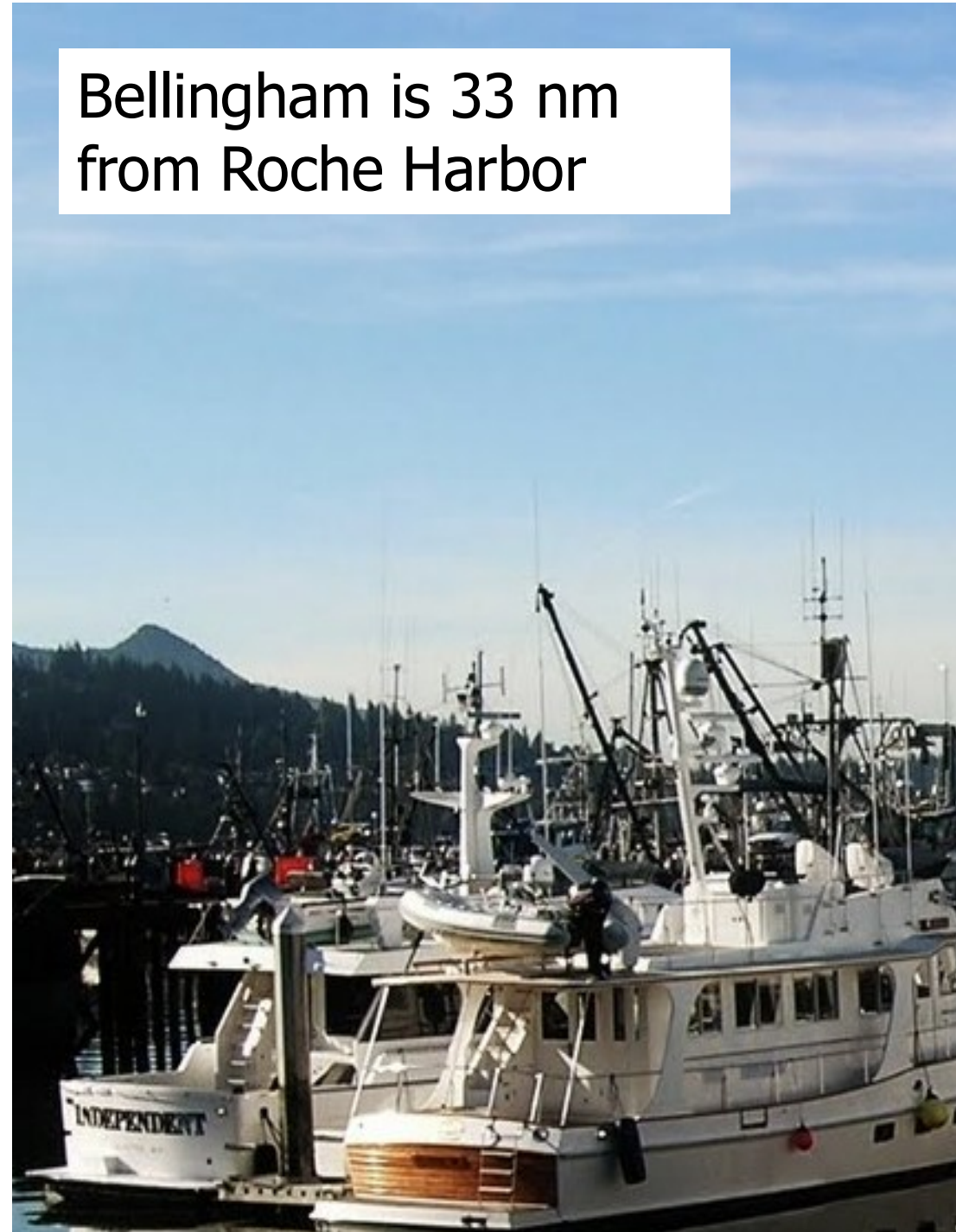
Roche Harbor

Saturday, Sept 27: Roche Harbor to Anacortes/Bellingham

Anacortes is 26 nm
from Roche Harbor



Bellingham is 33 nm
from Roche Harbor



EXAMPLE DETAIL CRUISE ITINERARY: ONE FOR EACH DAY

Monday, September 18th

Rosario Resort to Friday Harbor

12:00PM: Shove off for Friday Harbor. If you are in doubt about the sailing directions, contact *Wild Blue* on VHF 69 or 805-704-3333 and follow them to Friday. When cruising monitor VHF 69 for CYC Cruise boats along with VHF 16.

When you arrive at the Friday Harbor Marina, call the "Port of Friday Harbor" on VHF 66 to get your slip assignment. Also, don't be afraid to ask for docking assistance as Friday Harbor has a large and capable staff.

Friday Harbor: Friday Harbor has everything a bustling island community needs including ferry service and floatplane service. Escape the cruise here if you need to but, you'll be missing a great shopping and sightseeing experience. This is as busy as a marina can be with ferries, seaplanes, cars and boats whizzing around all day long. They have many slips or you can anchor instead. You'll want to visit the Whale Museum, San Juan Historical Museum and U of W's Friday Harbor Laboratories, if open for tours.

7:00PM: After a full day of Friday's, it's off to the San Juan Island Yacht Club (onshore at the north side of the slip area) for a catered dinner, special Commodore presentation, and travelogue "Cruising the West Side of Vancouver Island" by legendary Captain Brian Calvert.

Day 2, Monday September 18th

Rosario Resort (E. Sound Orcas Is.) to Friday Harbor (San Juan Is.)

Routing shown is southwest out of East Sound of Orcas Island, southeast through Upright Channel around the south end of Shaw Island.

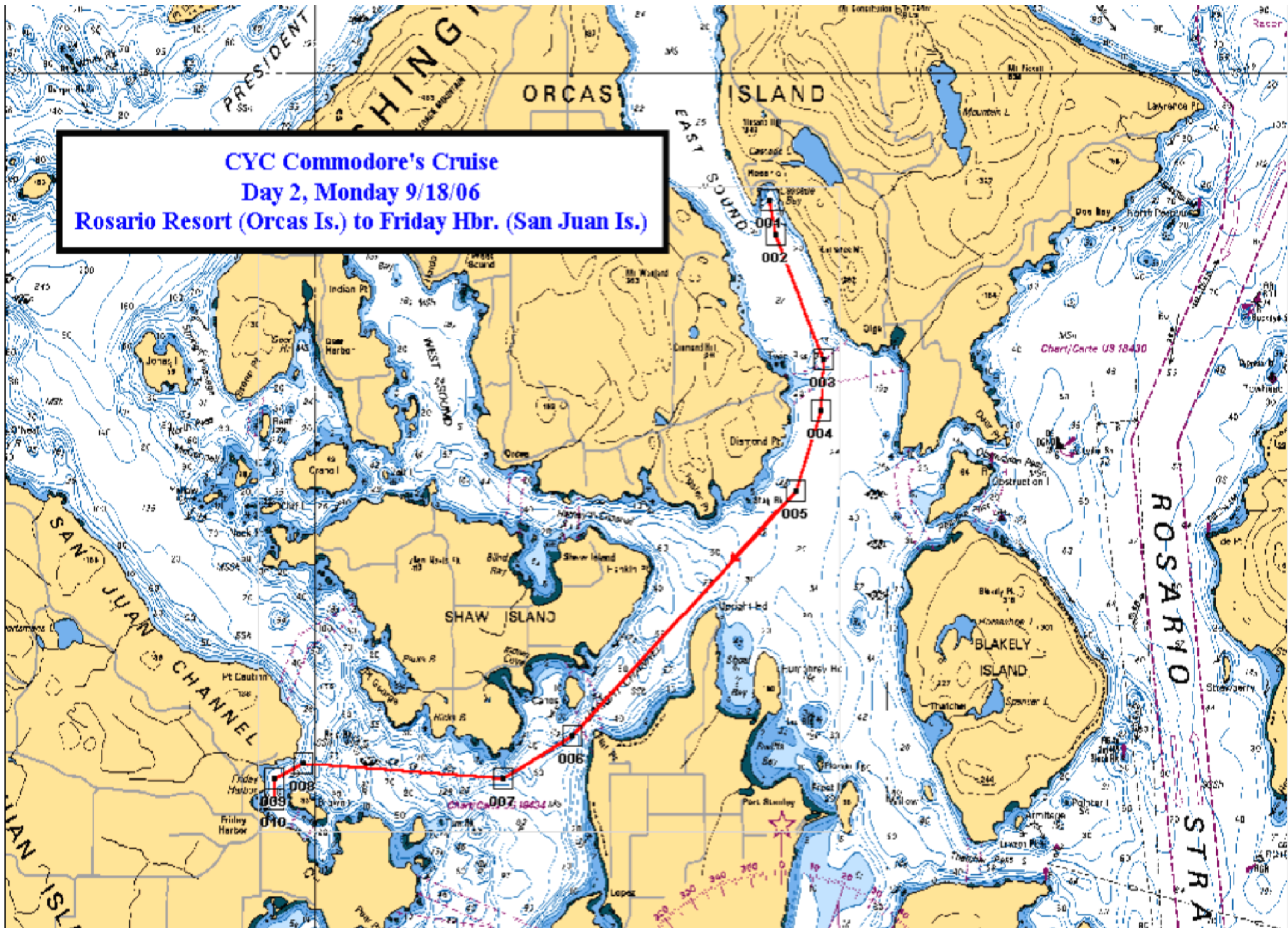
Route length: 10.7 NM,

Time at assumed speed of 10 Kts: 1:04

Assumed Start/Departure time: 12:00 PM, Arrival: 1:04PM

Berth/Mooring or anchoring details to be coordinated via VHF 66 upon arrival.

CYC Commodore's Cruise
Day 2, Monday 9/18/06
Rosario Resort (Orcas Is.) to Friday Hbr. (San Juan Is.)



02-CC-06 Monday 9/18/06

Delete Route | New Route | Route Properties

Estimated Fuel Consumption
 First to Last WP: 0.00 USGal
 Boat to Last WP: 0.00 USGal
 Set Rates

"No Name"
 Use Actual Information
 Lat: 48 38.629 N
 SOG: 10.0 Lon: 122 52.098 W

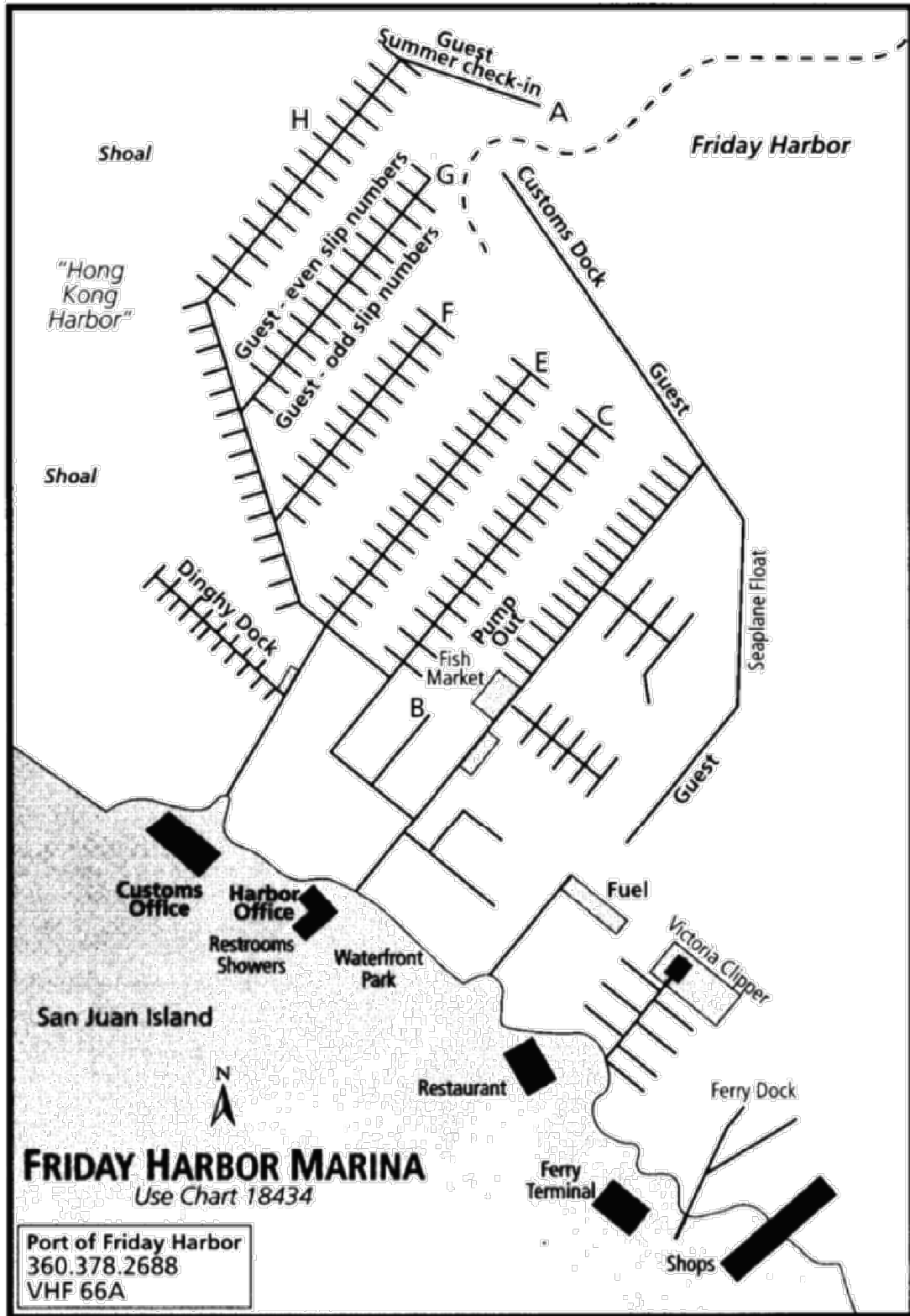
Apply SOG to All Legs | Set Leg SOG...

Delete Waypoint | New Waypoint | Waypoint Properties

Route Length
 First to Last WP: 10.721 nm
 Boat to Last WP: 10.722 nm

Route Time
 Use Current Date/Time
 Start Time: 10:00:00
 Start Date: 18-Sep-2006
 First to Last WP: 01:04:19
 Boat to Last WP:
 Total: 01:04:19
 ETA: 09/18-11:04

| Name | Lat | Lon | Rng To | Brg To | Rng Away | Brg Away | Leg SOG | Leg TTG | Leg ETA |
|------|-------------|--------------|--------|--------|----------|----------|---------|----------|----------|
| 001 | 48 38.629 N | 122 52.098 W | 0.001 | 299 M | 0.357 | 150 M | 10.000 | 00:00:00 | 10:00:00 |
| 002 | 48 38.278 N | 122 52.001 W | 0.357 | 150 M | 1.439 | 138 M | 10.000 | 00:02:08 | 10:02:09 |
| 003 | 48 36.951 N | 122 51.160 W | 1.439 | 138 M | 0.542 | 164 M | 10.000 | 00:08:37 | 10:10:47 |
| 004 | 48 36.410 N | 122 51.202 W | 0.542 | 164 M | 0.897 | 179 M | 10.000 | 00:03:15 | 10:14:02 |
| 005 | 48 35.559 N | 122 51.634 W | 0.897 | 179 M | 3.658 | 206 M | 10.000 | 00:05:23 | 10:19:25 |
| 006 | 48 32.989 N | 122 55.567 W | 3.658 | 206 M | 0.920 | 221 M | 10.000 | 00:21:56 | 10:41:22 |
| 007 | 48 32.526 N | 122 56.769 W | 0.920 | 221 M | 2.321 | 255 M | 10.000 | 00:05:31 | 10:46:53 |
| 008 | 48 32.688 N | 123 00.267 W | 2.321 | 255 M | 0.367 | 225 M | 10.000 | 00:13:55 | 11:00:49 |
| 009 | 48 32.529 N | 123 00.766 W | 0.367 | 225 M | 0.219 | 162 M | 10.000 | 00:02:12 | 11:03:01 |
| 010 | 48 32.310 N | 123 00.774 W | 0.219 | 162 M | N/A | N/A | 10.000 | 00:01:18 | 11:04:20 |



FRIDAY HARBOR MARINA
Use Chart 18434

Port of Friday Harbor
 360.378.2688
 VHF 66A

Charter Cost Estimates

Estimated Charter Cost for 2 Couples on a 40 ft Boat

| | | |
|---------------------------|--|---------------|
| 1-week Boat Charter: | About \$4000 for 40-foot powerboat | \$4000 |
| Charter Insurance: | Approximately 8% Charter cost | \$320 |
| Round-trip Airfare: | Approximately \$300 per person | \$1200 |
| Round-trip Bus to boat: | Approximately \$65 per person | \$260 |
| One Night Hotel: | \$100-150 per couple (only if needed) | \$300 |
| Provisioning: | Food for a week if you buy it yourself up there | \$400 |
| Daily Mooring Fees: | \$50 per boat per day unless anchored | \$300 |
| Fuel Cost: | Tank refill at end of cruise | \$1500 |
| Total Cost 1-week: | 2 couples excl dining out, shopping, etc | \$8280 |
| | or roughly about \$2100 per person per week excluding extras. | |

Chartering Considerations

- Find compatible cruise mates..... highly important!
- Find a crew mate that can operate the GPS; best situation
- Charter companies provide operational instructions; Inexperienced power boaters can take 2-hour courses; A written test is typically given by some companies.
- Select a boat you would consider buying
- Power boat vs. sailboat: Go with power for comfort. Slow power boats like Grand Banks (8-10 kts) are just fine.
- Book ASAP for lower charter prices and best boat selection; we are already getting shoulder "off" season prices
- Book from either Anacortes YC, Ship Harbor YC, ABC YC or Northwest YC to enjoy volume discounts of 5% and 10%
- Book within the next 60 days to insure charter availability

Anacortes Charter Companies

Anacortes Yacht Charters, www.ayc.com

ABC Yacht Charters, www.abcyachtcharters.com

Ship Harbor Yacht Charters, www.shipharboryachts.com

Bellingham Charter Companies

Northwest Explorations, www.nwexplorations.com

San Juan Sailing, www.sanjuansailing.com

Bellhaven Yacht Charters, www.bellhaven.net

Bellingham Yachts, www.bellinghamyachts.com

British Columbia Charter Companies

Cooper Boating-Vancouver BC, www.cooperboating.com

Island Cruising-Sidney BC, www.islandcruising.com

Cruise Information Available Tonight

- Signup clipboard is being passed around. Email list will be created from signup sheet.
- Cruise Schedule with Charter Company website addresses
- 2006 Cruise Instructions as example
- Questions?

This document was created with Win2PDF available at <http://www.win2pdf.com>.
The unregistered version of Win2PDF is for evaluation or non-commercial use only.
This page will not be added after purchasing Win2PDF.